

STEEL, CONCRETE, OR WOOD
SUBSTRATE

DIM. VARIES PER PROJECT

DIM. VARIES PER PROJECT

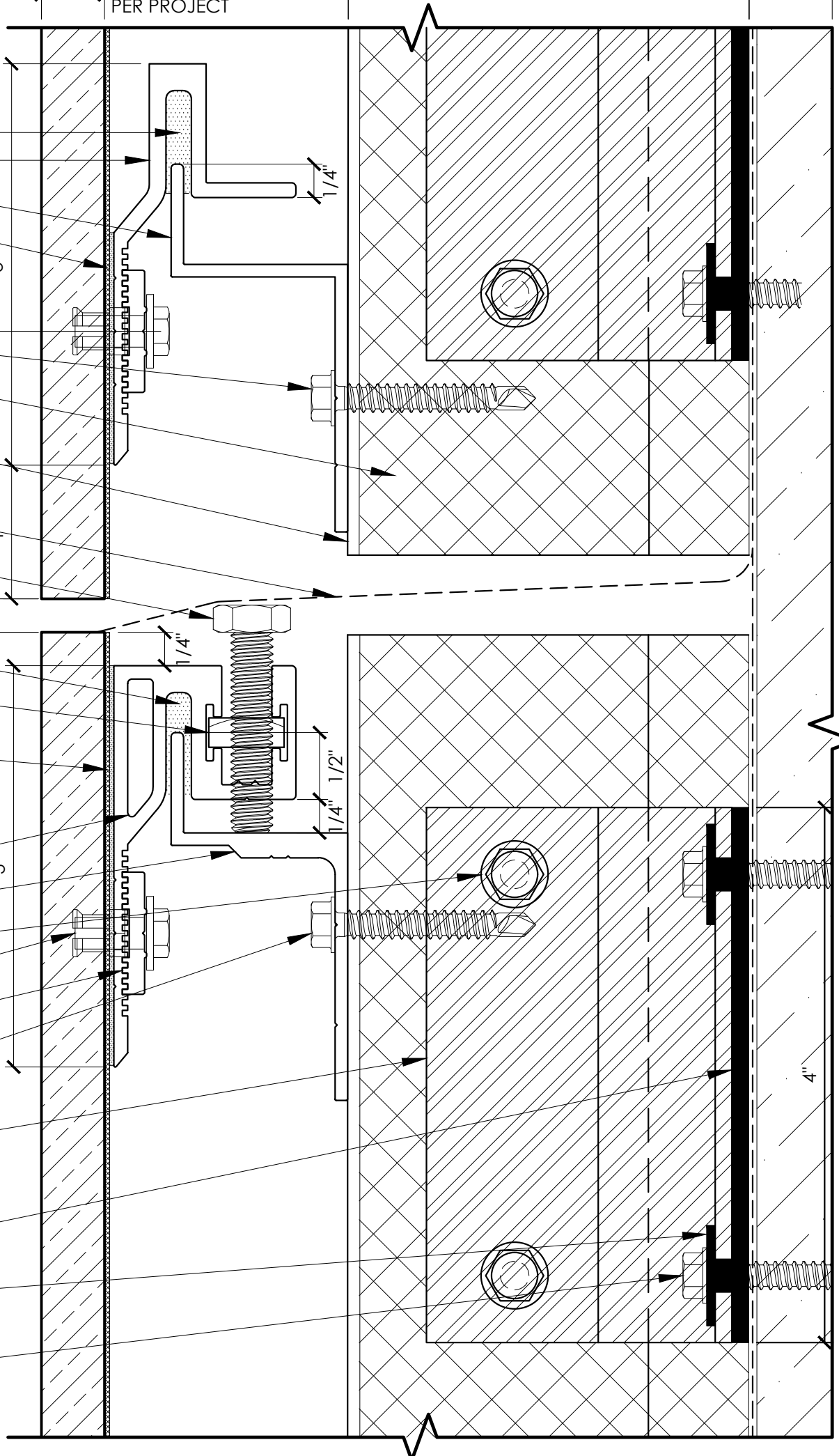
ADJUSTABLE 2"-5"

OPTIONAL FOR EXTERIOR INSULATION

DIM. VARIES PER PROJECT

- CONTINUOUS SILICONE IN KERF
- WIND LOAD PANEL ANCHOR (502)
- WIND LOAD SUBSTRATE ANCHOR (503)
- GRIDWORX PROPRIETARY HIGH STRENGTH, FAST CURE STP (SILANE TERMINATED POLYETHER) ADHESIVE/SEALANT
- 1/4" X 1-1/2" (16" O.C. MAX) (F203)
- INSULATION (BY OTHERS)
- GRIDWORX ADJUSTABLE VERTICAL MULLION (A211) (A214) (A212) (A215) (A216) 16" O.C.
- WATER PROOFING (BY OTHERS)
- 5/16"-18 X 1 1/2" ADJUSTMENT SCREW @ 1/4 POINTS (323)

- CONTINUOUS SEALANT IN KERF
- ADJUSTMENT NUT (@ 1/4 POINTS) (322)
- GRIDWORX PROPRIETARY HIGH STRENGTH, FAST CURE STP (SILANE TERMINATED POLYETHER) ADHESIVE/SEALANT
- DEAD LOAD PANEL ANCHOR (500)
- DEAD LOAD SUBSTRATE ANCHOR (501)
- 1/4" X 1-1/8" (F201)
- KEIL 8.5 MM UNDERCUT ANCHOR (F352)
- LOCK WASHER (325)
- 1/4" X 1-1/2" (16" O.C. MAX) (F203)
- GRIDWORX ADJUSTABLE DISCRETE GIRT SUPPORT (A202) (A203) (16" O.C. HORIZONTAL) (A204) (24" O.C. VERTICAL) (A205)
- THERMAL BREAKING BACK PLATE (C311)
- THERMAL BREAKING SLEEVE WASHER (C300)
- 1/4" X 2-1/2" FOR STEEL STUD (F205)
- 1/4" X 2-1/4" FOR CONCRETE/CMU (F104)
- 1/4" X 3" FOR WOOD STUD (F505)
- FASTENER 24" OC VERTICAL SPACING



COPYRIGHT 2015 PRECISION WALL SYSTEMS, INC. - ALL RIGHTS RESERVED - PROTECTED UNDER U.S. PATENT No. 8,051,623 B2 & 8,341,901 & 8,950,131. ADDITIONAL PATENTS PENDING.

THERMALLY BROKEN SUBFRAME DEFLECTION JOINT SECTION DETAIL

DRAWN BY:
GRIDWORX
 STONE HANGING SYSTEM
 PRECISION WALL SYSTEMS
 10980 ALDER CIRCLE
 DALLAS, TEXAS 75238
 TEL: 214-774-4802
 FAX: 214-432-5883
 ARCHITECT:
 TEL:
 FAX:

ULTRA SYSTEM
 DATE:
 NOTES:
 SCALE: 1:1
 TITLE:
 SHEET: