

5/16"-18 X 1 1/2" ADJUSTMENT SCREW @ 1/4 POINTS 323

GRIDWORX PROPRIETARY HIGH STRENGTH, FAST CURE STP (SILANE TERMINATED POLYETHER) ADHESIVE/SEALANT

DEAD LOAD PANEL ANCHOR 500

CONTINUOUS SILICONE IN KERF

ADJUSTMENT NUT (@ 1/4 POINTS) 322

DEAD LOAD SUBSTRATE ANCHOR 501

1/4" X 1-1/8" F201

LOCK WASHER 325

KEIL 8.5 MM UNDERCUT ANCHOR F352

1/4" X 1-1/2" (16" O.C. MAX) F203

INSULATION (BY OTHERS)

GRIDWORX ADJUSTABLE VERTICAL MULLION 16" O.C.

A211 A212 A214 A215 A216

GRIDWORX ADJUSTABLE DISCRETE GIRT SUPPORT (16" O.C. HORIZONTAL 24" O.C. VERTICAL)

A202 A203 A204 A205

THERMAL BREAKING SLEEVE WASHER C300

1/4" X 2-1/2" FOR STEEL STUD F205

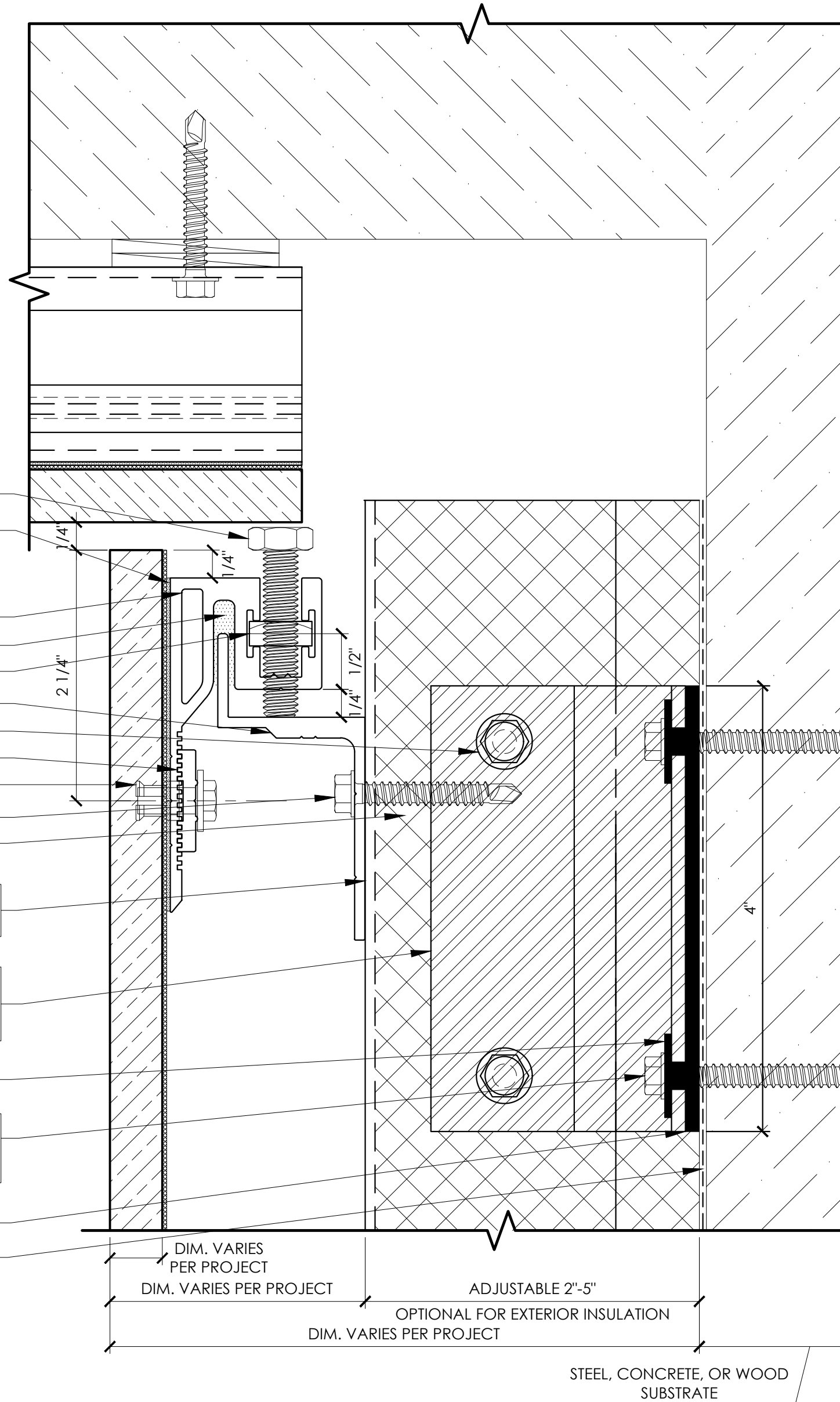
1/4" X 2-1/4" FOR CONCRETE/CMU F104

1/4" X 3" FOR WOOD STUD F505

FASTENER 24" OC VERTICAL SPACING

THERMAL BREAKING BACK PLATE C311

WATER PROOFING (BY OTHERS)



THERMALLY BROKEN SUBFRAME
SOFFIT RETURN DETAIL

SHEET:	TITLE:	NOTES:	DATE:	ULTRA SYSTEM
		SCALE: 1:1		

DRAWN BY:

GRIDWORX
STONE HANGING SYSTEM

PRECISION WALL SYSTEMS
10980 ALDER CIRCLE
DALLAS, TEXAS 75238
TEL: 214-774-4802
FAX: 214-432-5883

ARCHITECT:

TEL:

FAX:

COPYRIGHT 2015 PRECISION WALL SYSTEMS, INC. - ALL RIGHTS RESERVED - PROTECTED UNDER U.S. PATENT NO. 8,051,623 B2 & 8,341,901 & 8,950,131. ADDITIONAL PATENTS PENDING.