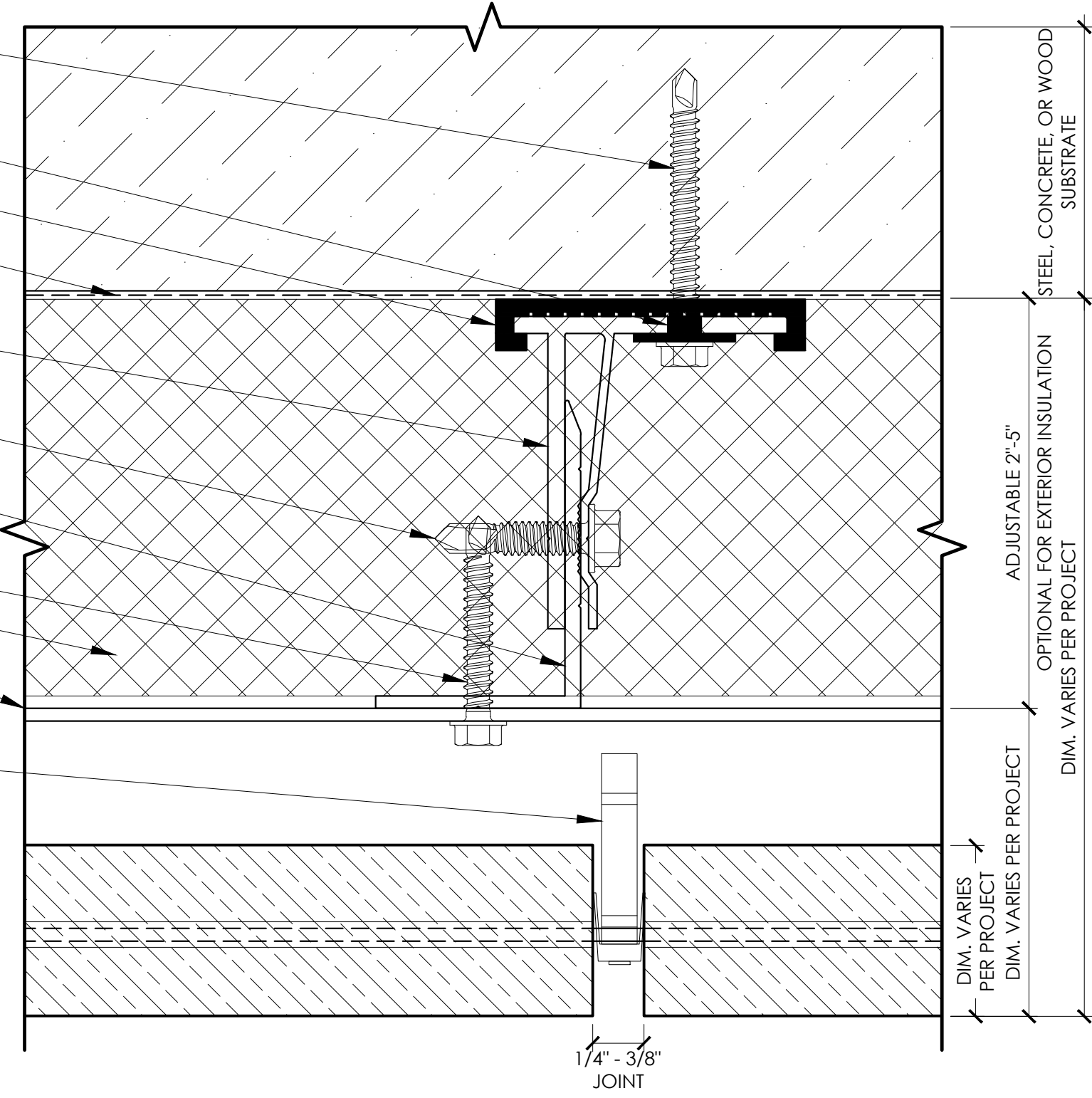


- 1/4" X 2-1/2" FOR STEEL STUD (F205)
- 1/4" X 2-1/4" FOR CONCRETE/CMU (F104)
- 1/4" X 3" FOR WOOD STUD (F505)
- FASTENER 24" OC VERTICAL SPACING
- THERMAL BREAKING SLEEVE WASHER (C300)
- THERMAL BREAKING BACK PLATE (C311)
- WATER PROOFING (BY OTHERS)
- GRIDWORX ADJUSTABLE DISCRETE GIRT SUPPORT (16" O.C. HORIZONTAL 24" O.C. VERTICAL) (A202, A203, A204, A205)
- 1/4" X 1-1/8" (F201)
- GRIDWORX ADJUSTABLE VERTICAL MULLION 16" O.C. (A211, A212, A214, A215, A216)
- 1/4" X 1-1/2" (16" O.C. MAX) (F203)
- INSULATION (BY OTHERS)
- GRIDWORX ANCHOR (BLACK IN COLOR)
- GRIDWORX VERTICAL WATERBLOCKER (OPTIONAL) 4" (V001), 8" (V002), 12" (V003), 24" (V004)



STEEL, CONCRETE, OR WOOD SUBSTRATE

ADJUSTABLE 2"-5"

OPTIONAL FOR EXTERIOR INSULATION DIM. VARIES PER PROJECT

DIM. VARIES PER PROJECT

DIM. VARIES PER PROJECT

1/4" - 3/8"
 JOINT

THERMALLY BROKEN SUBFRAME
 PLAN VIEW

KERF SYSTEM
DATE:
NOTES:
SCALE: 1:1
TITLE:
SHEET: