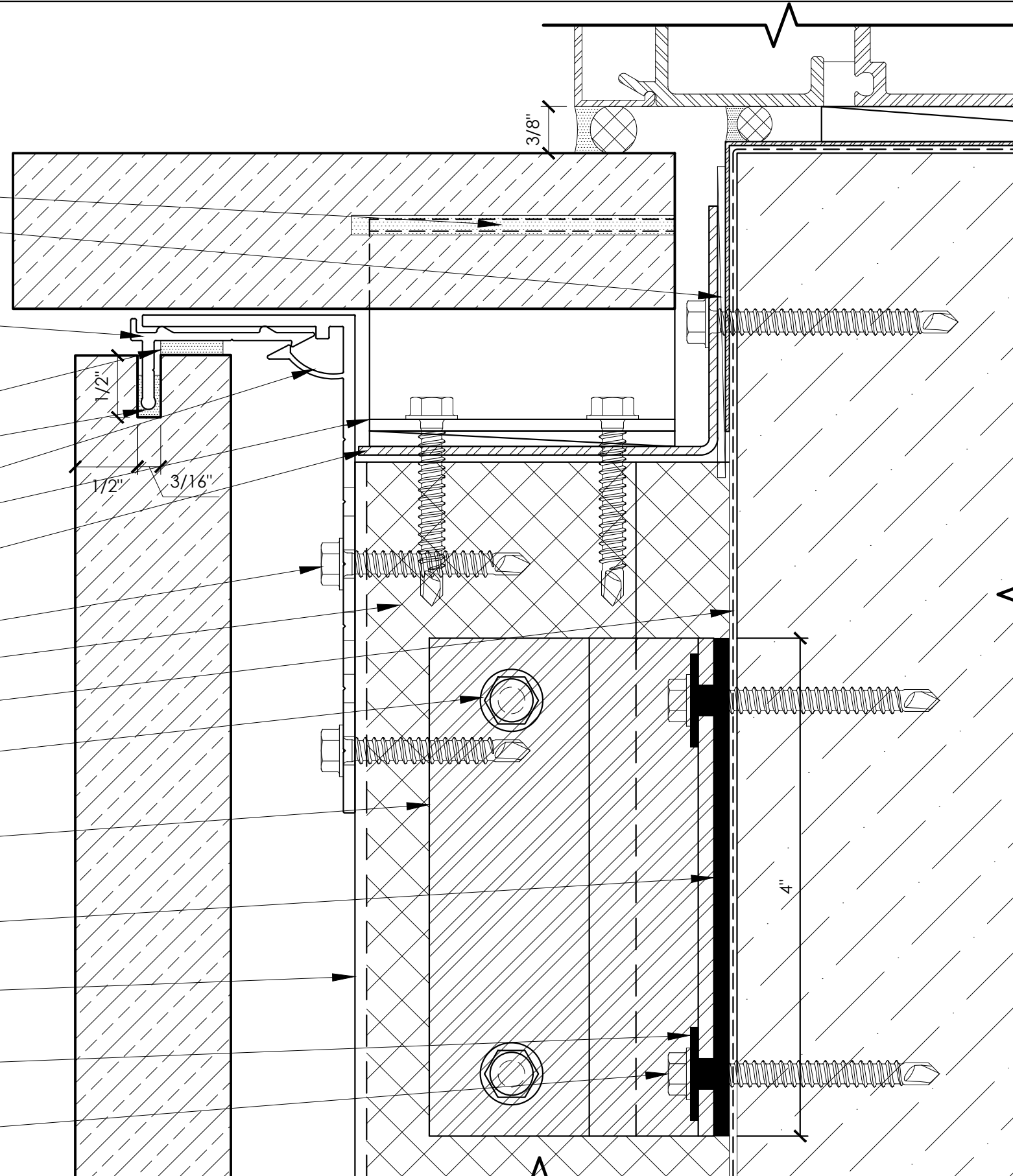


- LOW MODULUS SILICONE IN KERF
- MINIMUM 1/16" SHIM FOR THERMAL BREAK
- GRIDWORX L BRACKET (L101B, L103B)
- FOAM TAPE APPLIED TO GRIDWORX L BRACKET (C001, C002)
- CONTINUOUS SEALANT IN KERF
- EXTENDED TOP COURSE ANCHOR (103)
- SOFFIT T ANCHOR (104)
- ALUMINUM ANGLE (SIZE AND GAUGE VARIES BY PROJECT)
- 1/4" X 1-1/2" (16" O.C. MAX) (F203)
- INSULATION (BY OTHERS)
- WATER PROOFING BY OTHER (BY OTHERS)
- 1/4" X 1-1/8" (F201)
- GRIDWORX ADJUSTABLE DISCRETE GIRT SUPPORT (A202, A203, A204, A205)
- THERMAL BREAKING BACK PLATE (C311)
- GRIDWORX ADJUSTABLE VERTICAL MULLION 16" O.C. (A211, A212, A214, A215, A216)
- THERMAL BREAKING SLEEVE WASHER (C300)
- 1/4" X 2-1/2" FOR STEEL STUD (F205)
- 1/4" X 2-1/4" FOR CONCRETE/CMU (F104)
- 1/4" X 3" FOR WOOD STUD (F505)
- FASTENER 24" OC VERTICAL SPACING



DIM. VARIES PER PROJECT

DIM. VARIES PER PROJECT

ADJUSTABLE 2"-5"

OPTIONAL FOR EXTERIOR INSULATION

DIM. VARIES PER PROJECT

STEEL, CONCRETE, OR WOOD SUBSTRATE

THERMAL BROKEN SUBFRAME
WINDOW SILL

KERF SYSTEM

DATE:

NOTES:

SCALE: 1:1

TITLE:

SHEET: