

STEEL, CONCRETE
OR WOOD
SUBSTRATE

DIM. VARIES PER PROJECT

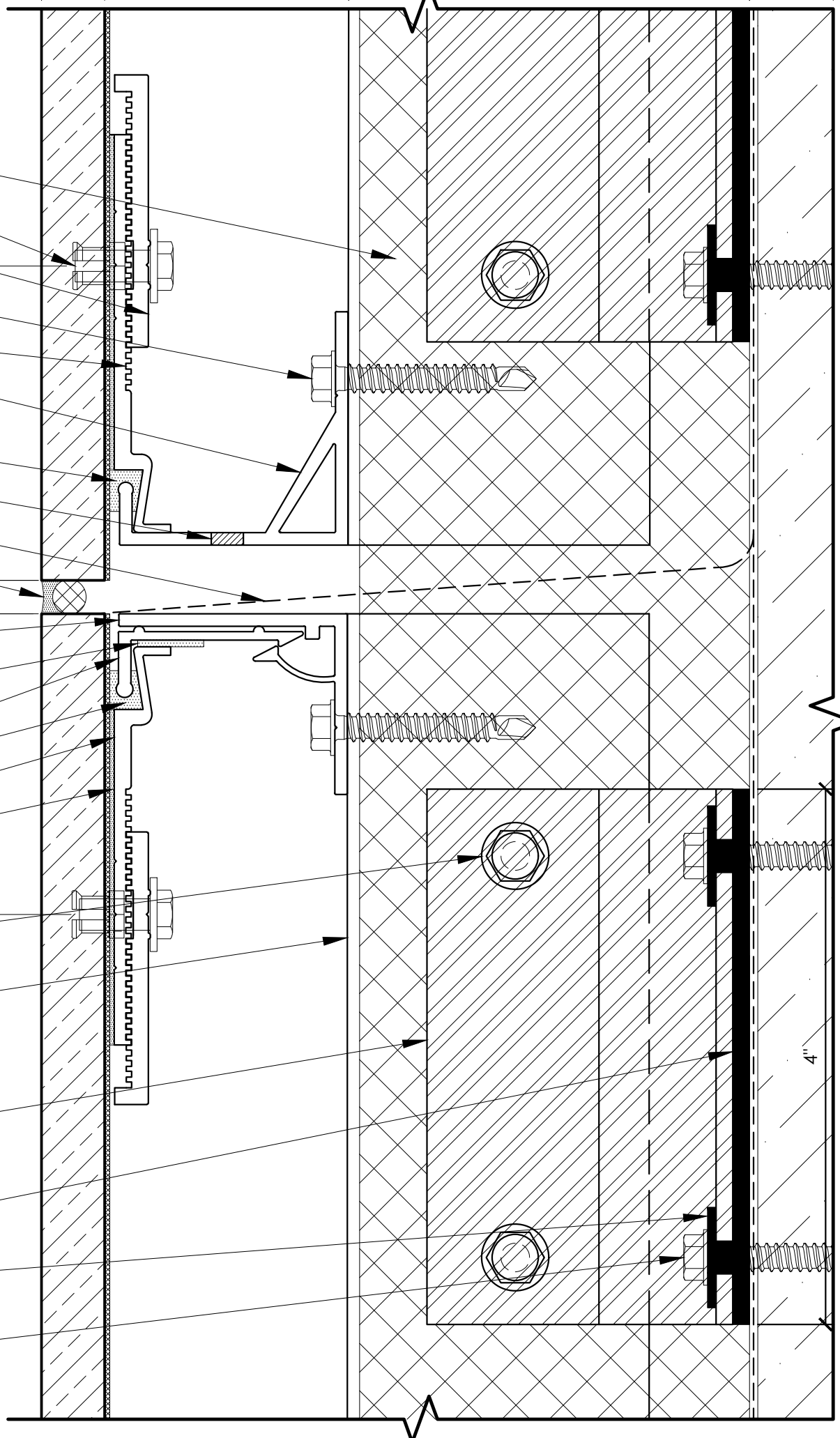
DIM. VARIES PER PROJECT

ADJUSTABLE 2"-5"

OPTIONAL FOR EXTERIOR INSULATION

DIM. VARIES
PER PROJECT

- INSULATION (BY OTHERS)
- KEIL 8.5 MM UNDERCUT ANCHOR (F352)
- GRIDWORX MECHANICAL KERF LOCK WASHER (565)
- 1/4" X 1-1/2" (16" O.C. MAX) (F203)
- MECHANICAL KERF ANCHOR (560)
- STARTER J ANCHOR (001)
- CONTINUOUS SILICONE IN KERF (2 3/8")
- WEEP HOLES
- WATER PROOFING (BY OTHERS)
- LOW MODULUS SILICONE W/ BACKER ROD (1/4")
- TOP COURSE ANCHOR (003)
- FOAM TAPE APPLIED TO GRIDWORX L BRACKET (C001)
- GRIDWORX L BRACKET (L001)
- CONTINUOUS SEALANT IN KERF (2 1/4")
- MECHANICAL KERF ANCHOR (550)
- GRIDWORX PROPRIETARY HIGH STRENGTH, FAST CURE STP (SILANE TERMINATED POLYETHER) ADHESIVE/SEALANT
- 1/4" X 1-1/8" (F201)
- GRIDWORX ADJUSTABLE VERTICAL MULLION (A211, A214, A212, A215, A216) 16" O.C.
- GRIDWORX ADJUSTABLE DISCRETE GIRT SUPPORT (A202, A203, A204, A205) (16" O.C. HORIZONTAL, 24" O.C. VERTICAL)
- THERMAL BREAKING BACK PLATE (C311)
- THERMAL BREAKING SLEEVE WASHER (C300)
- 1/4" X 2-1/2" FOR STEEL STUD (F205)
- 1/4" X 2-1/4" FOR CONCRETE/CMU (F104)
- 1/4" X 3" FOR WOOD STUD (F505)
- FASTENER 24" OC VERTICAL SPACING



COPYRIGHT 2015 PRECISION WALL SYSTEMS, INC. - ALL RIGHTS RESERVED - PROTECTED UNDER U.S. PATENT No.8,051,623 B2 & 8,341,901 & 8,950,131. ADDITIONAL PATENTS PENDING.

THERMALLY BROKEN SUBFRAME DEFLECTION JOINT SECTION DETAIL

DRAWN BY:
 ARCHITECT:
 TEL:
 FAX:
 PRECISION WALL SYSTEMS
 10980 ALDER CIRCLE
 DALLAS, TEXAS 75238
 TEL: 214.774.4802
 FAX: 214.432.5883

MECHANICAL KERF SYSTEM
 DATE:
 NOTES:
 SCALE: 1:1
 TITLE:
 SHEET: