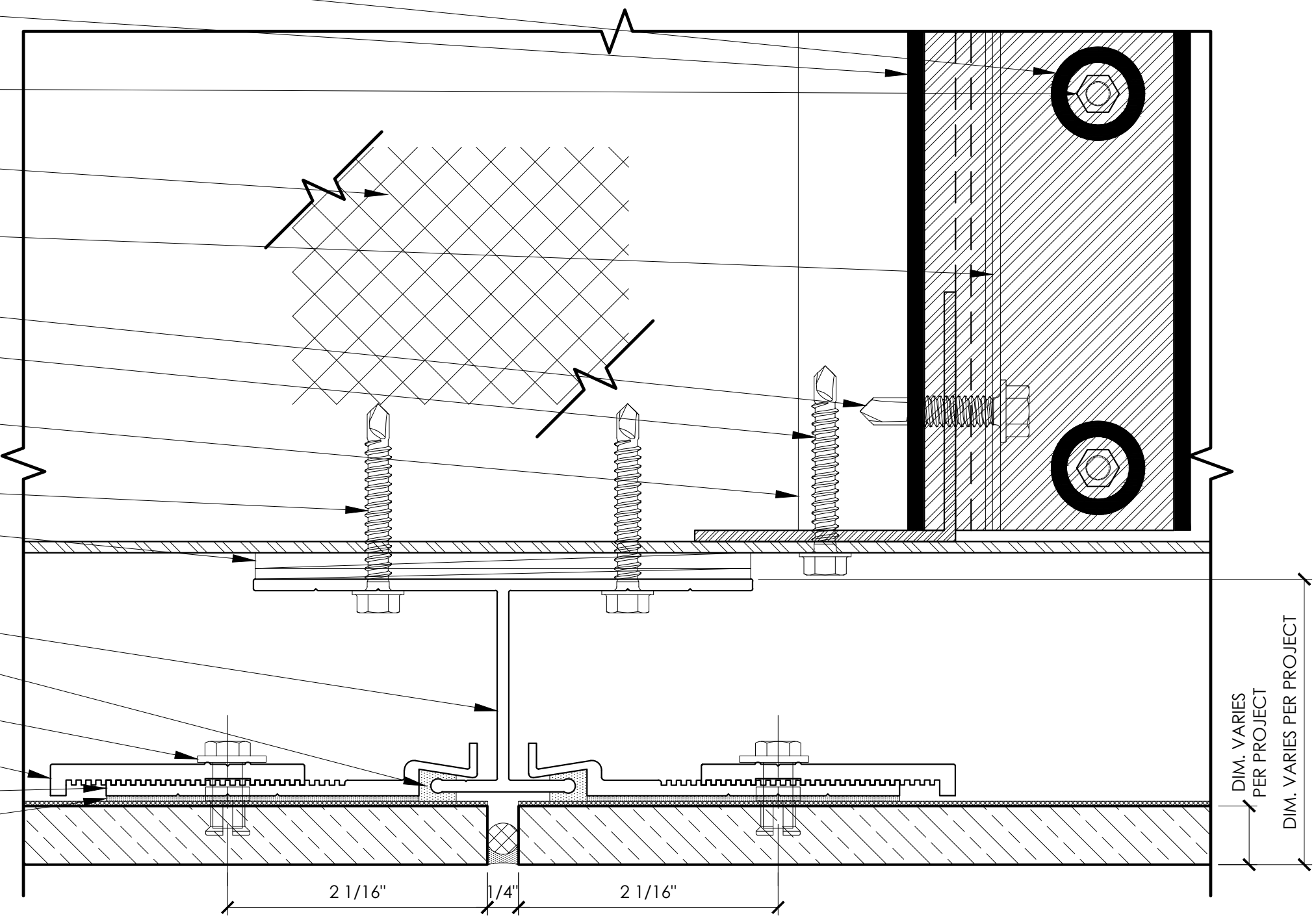


**THERMALLY BROKEN SUBFRAME**  
 SOFFIT SECTION DETAIL

- THERMAL BREAKING SLEEVE WASHER (C300)
- THERMAL BREAKING BACK PLATE (C311)
- 1/4" X 2-1/2" FOR STEEL STUD (F205)
- 1/4" X 2-1/4" FOR CONCRETE/CMU (F104)
- 1/4" X 3" FOR WOOD STUD (F505)
- FASTENER 24" OC VERTICAL SPACING
- INSULATION (BY OTHERS)
- GRIDWORX ADJUSTABLE DISCRETE GIRT SUPPORT (A202)
- (16" O.C. HORIZONTAL (A203)
- 24" O.C. VERTICAL) (A205)
- 1/4" X 1-1/8" (F201)
- 1/4" X 1-1/2" (16" O.C. MAX) (F203)
- GRIDWORX ADJUSTABLE VERTICAL MULLION (A211) (A214)
- (A212) (A215)
- 16" O.C. (A216)
- 1/4" X 1-1/2" (16" O.C. MAX) (F203)
- FULL BEARING HI-IMPACT RESISTANT PLASTIC SHIM(S) FIELD VERIFY (AS NEEDED, 5/8" MAX)
- GRIDWORX SOFFIT T ANCHOR (104)
- CONTINUOUS SILICONE IN KERF
- KEIL 8.5 MM UNDERCUT ANCHOR (F352)
- GRIDWORX MECHANICAL KERF LOCK WASHER (565)
- MECHANICAL KERF ANCHOR (560)
- GRIDWORX PROPRIETARY HIGH STRENGTH, FAST CURE STP (SILANE TERMINATED POLYETHER) ADHESIVE/SEALANT



MECHANICAL KERF SYSTEM
DATE:
NOTES:
SCALE: 1:1
TITLE:
SHEET: