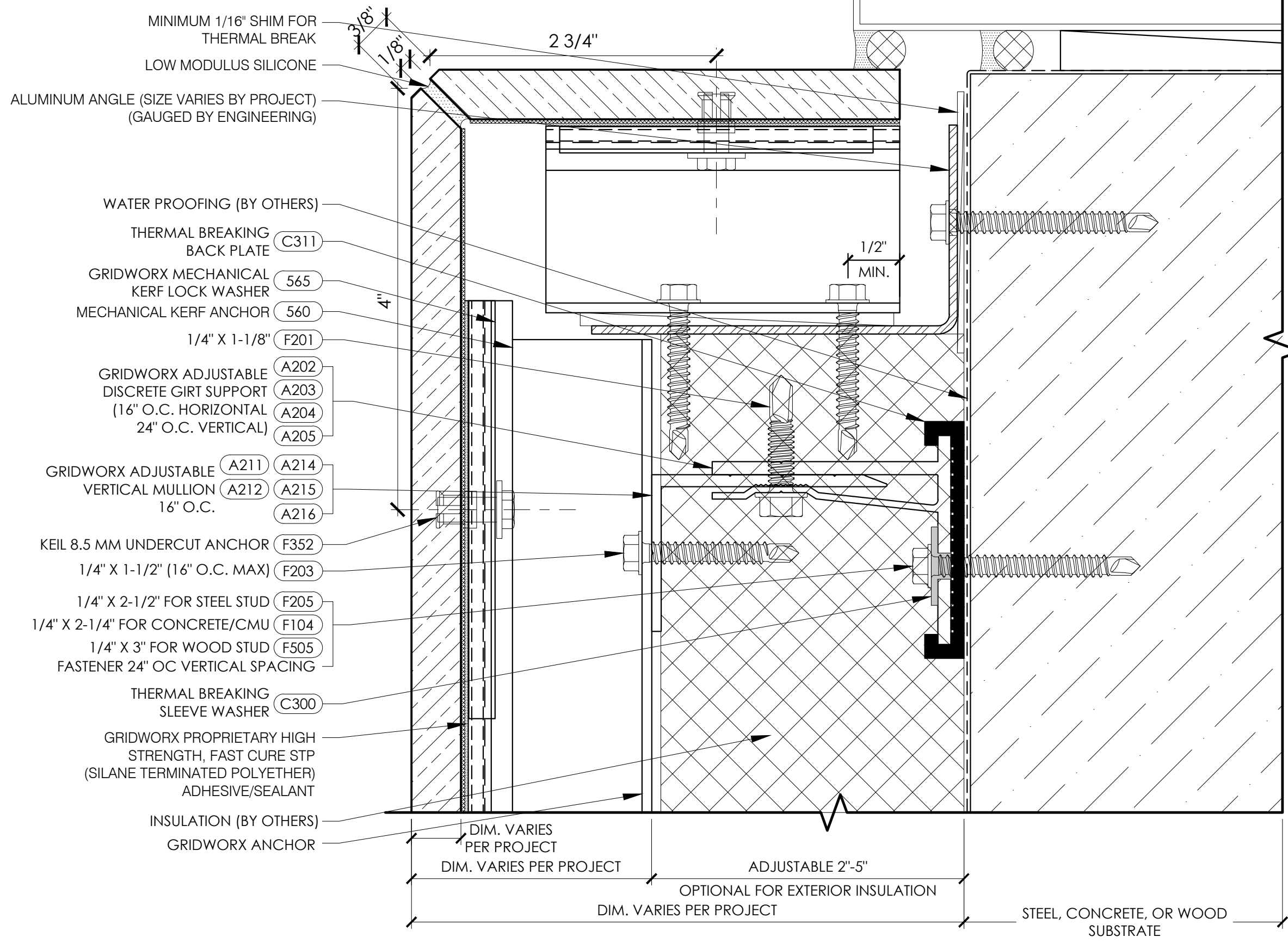


**THERMAL BROKEN SUBFRAME**  
 WINDOW/DOOR JAMB



- MINIMUM 1/16" SHIM FOR THERMAL BREAK
- LOW MODULUS SILICONE
- ALUMINUM ANGLE (SIZE VARIES BY PROJECT) (GAUGED BY ENGINEERING)
- WATER PROOFING (BY OTHERS)
- THERMAL BREAKING BACK PLATE (C311)
- GRIDWORX MECHANICAL KERF LOCK WASHER (565)
- MECHANICAL KERF ANCHOR (560)
- 1/4" X 1-1/8" (F201)
- GRIDWORX ADJUSTABLE DISCRETE GIRT SUPPORT (16" O.C. HORIZONTAL 24" O.C. VERTICAL) (A202, A203, A204, A205)
- GRIDWORX ADJUSTABLE VERTICAL MULLION (16" O.C.) (A211, A212, A214, A215, A216)
- KEIL 8.5 MM UNDERCUT ANCHOR (F352)
- 1/4" X 1-1/2" (16" O.C. MAX) (F203)
- 1/4" X 2-1/2" FOR STEEL STUD (F205)
- 1/4" X 2-1/4" FOR CONCRETE/CMU (F104)
- 1/4" X 3" FOR WOOD STUD (F505)
- FASTENER 24" OC VERTICAL SPACING
- THERMAL BREAKING SLEEVE WASHER (C300)
- GRIDWORX PROPRIETARY HIGH STRENGTH, FAST CURE STP (SILANE TERMINATED POLYETHER) ADHESIVE/SEALANT
- INSULATION (BY OTHERS)
- GRIDWORX ANCHOR

DIM. VARIES PER PROJECT  
 DIM. VARIES PER PROJECT  
 ADJUSTABLE 2"-5"  
 OPTIONAL FOR EXTERIOR INSULATION  
 DIM. VARIES PER PROJECT  
 STEEL, CONCRETE, OR WOOD SUBSTRATE

MECHANICAL KERF SYSTEM
DATE:
NOTES:
SCALE: 1:1
TITLE:
SHEET: