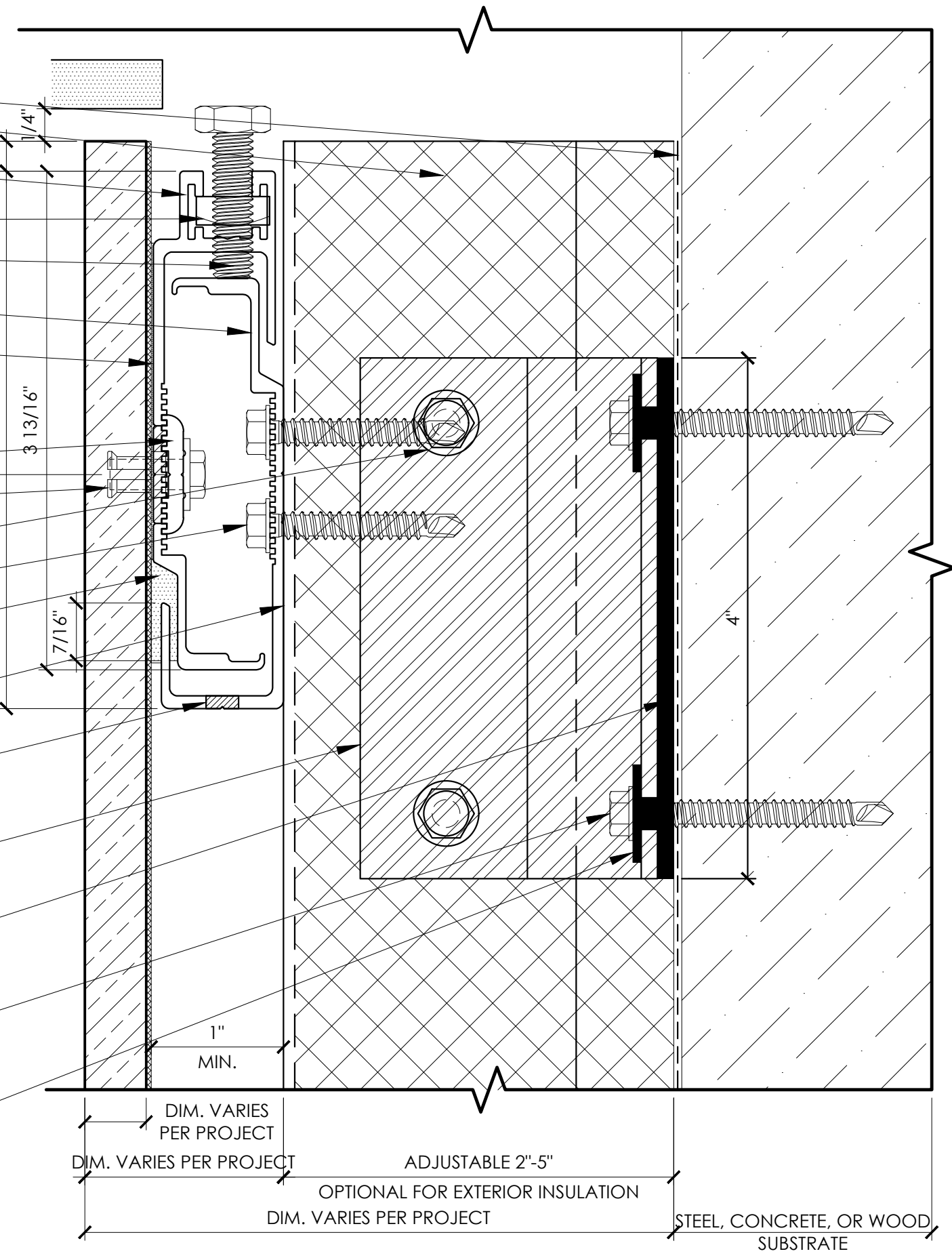


- WATER PROOFING (BY OTHERS)
- INSULATION (BY OTHERS)
- DEAD LOAD PANEL ANCHOR (DISCRETE) (580)
- ADJUSTMENT NUT (@ 1/4 POINTS) (322)
- 5/16"-18 X 1 1/8" ADJUSTMENT SCREW @1/4 POINTS (324)
- SUBSTRATE ANCHOR (CONTINUOUS) (581A)
- GRIDWORX PROPRIETARY HIGH STRENGTH, FAST CURE STP (SILANE TERMINATED POLYETHER) ADHESIVE/SEALANT
- LOCK WASHER (325)
- KEIL 8.5 MM UNDERCUT ANCHOR (F352)
- 1/4" X 1-1/8" (F201)
- 1/4" X 1-1/2" (16" O.C. MAX) (F203)
- CONTINUOUS SILICONE IN KERF
- GRIDWORX ADJUSTABLE VERTICAL MULLION 16" O.C. (A211, A212, A214, A215, A216)
- WEEP HOLES (24" O.C.)
- GRIDWORX ADJUSTABLE DISCRETE GIRT SUPPORT (16" O.C. HORIZONTAL, 24" O.C. VERTICAL) (A202, A203, A204, A205)
- THERMAL BREAKING BACK PLATE (C311)
- 1/4" X 2-1/2" FOR STEEL STUD (F205)
- 1/4" X 2-1/4" FOR CONCRETE/CMU (F104)
- 1/4" X 3" FOR WOOD STUD (F505)
- FASTENER 24" OC VERTICAL SPACING
- THERMAL BREAKING SLEEVE WASHER (C300)



**THERMALLY BROKEN SUBFRAME**  
 TOP DEAD LOAD SECTION DETAIL

ULTRA L SYSTEM
DATE:
NOTES:
SCALE: 1:1
TITLE:
SHEET: