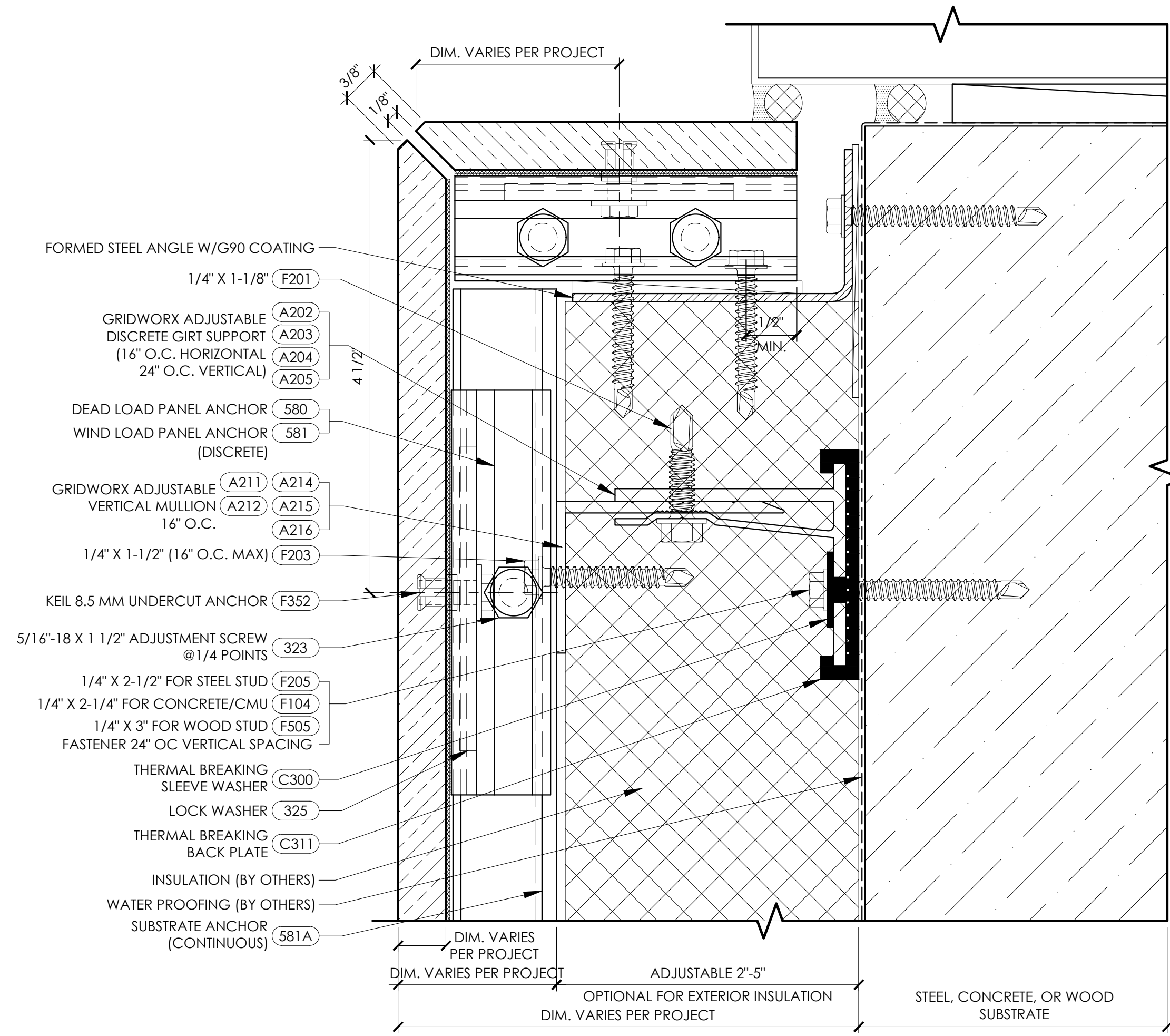


**THERMAL BROKEN SUBFRAME**  
 WINDOW/DOOR JAMB



- FORMED STEEL ANGLE W/G90 COATING
- 1/4" X 1-1/8" (F201)
- GRIDWORX ADJUSTABLE DISCRETE GIRT SUPPORT (16" O.C. HORIZONTAL 24" O.C. VERTICAL) (A202, A203, A204, A205)
- DEAD LOAD PANEL ANCHOR (580)
- WIND LOAD PANEL ANCHOR (DISCRETE) (581)
- GRIDWORX ADJUSTABLE VERTICAL MULLION (16" O.C.) (A211, A212, A214, A215, A216)
- 1/4" X 1-1/2" (16" O.C. MAX) (F203)
- KEIL 8.5 MM UNDERCUT ANCHOR (F352)
- 5/16"-18 X 1 1/2" ADJUSTMENT SCREW @1/4 POINTS (323)
- 1/4" X 2-1/2" FOR STEEL STUD (F205)
- 1/4" X 2-1/4" FOR CONCRETE/CMU (F104)
- 1/4" X 3" FOR WOOD STUD (F505)
- FASTENER 24" OC VERTICAL SPACING
- THERMAL BREAKING SLEEVE WASHER (C300)
- LOCK WASHER (325)
- THERMAL BREAKING BACK PLATE (C311)
- INSULATION (BY OTHERS)
- WATER PROOFING (BY OTHERS)
- SUBSTRATE ANCHOR (CONTINUOUS) (581A)

DIM. VARIES PER PROJECT

3/8"

1/8"

4 1/2"

1/2" MIN.

DIM. VARIES PER PROJECT

DIM. VARIES PER PROJECT

ADJUSTABLE 2"-5"

OPTIONAL FOR EXTERIOR INSULATION

DIM. VARIES PER PROJECT

STEEL, CONCRETE, OR WOOD SUBSTRATE