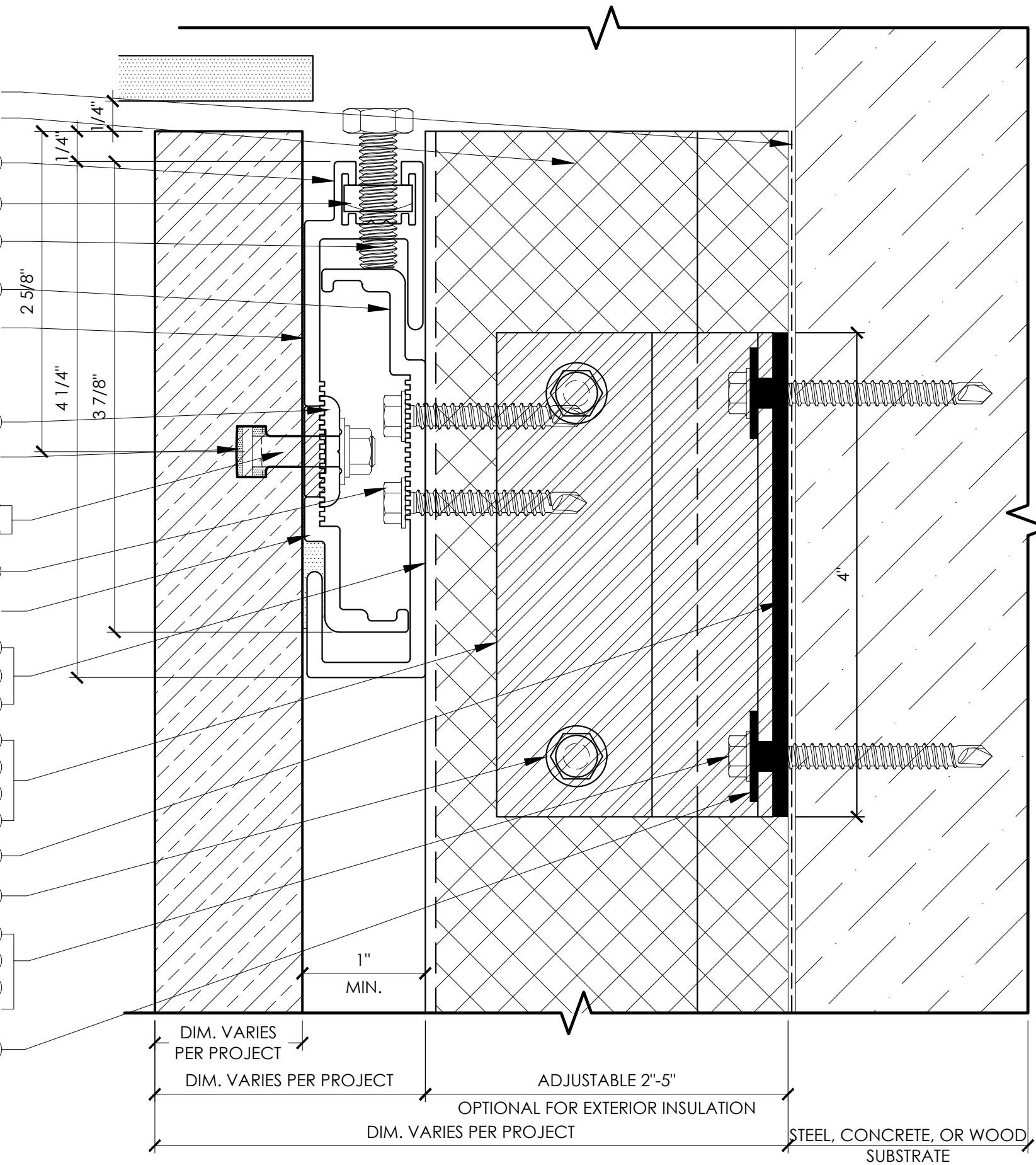


- WATER PROOFING (BY OTHERS)
- INSULATION (BY OTHERS)
- DEAD LOAD PANEL ANCHOR (DISCRETE) (570)
- ADJUSTMENT NUT (@ 1/4 POINTS) (322)
- 5/16"-18 X 1 1/8" ADJUSTMENT SCREW @ 1/4 POINTS (324)
- SUBSTRATE ANCHOR (CONTINUOUS) (571A)
- GRIDWORX PROPRIETARY HIGH STRENGTH, FAST CURE STP (SILANE TERMINATED POLYETHER) ADHESIVE/SEALANT
- LOCK WASHER (575)
- LOW MODULUS SILICONE APPLIED INTO T-31 SLOT
- GRIDWORX TYPE #31 1-1/4" ANCHORS (MAX 30" VERTICAL, 24" HORIZONTAL) (F300) (F301)
- 1/4" X 1-1/2" (16" O.C. MAX) (F203)
- CONTINUOUS SILICONE IN KERF
- GRIDWORX ADJUSTABLE VERTICAL MULLION 16" O.C. (A211) (A212) (A214) (A215) (A216)
- GRIDWORX ADJUSTABLE DISCRETE GIRT SUPPORT (16" O.C. HORIZONTAL) (24" O.C. VERTICAL) (A202) (A203) (A204) (A205)
- THERMAL BREAKING BACK PLATE (C311)
- 1/4" X 1-1/8" (F201)
- 1/4" X 2-1/2" FOR STEEL STUD (F205)
- 1/4" X 2-1/4" FOR CONCRETE/CMU (F104)
- 1/4" X 3" FOR WOOD STUD (F505)
- FASTENER 24" OC VERTICAL SPACING
- THERMAL BREAKING SLEEVE WASHER (C300)



THERMALLY BROKEN SUBFRAME
 TOP DEAD LOAD SECTION DETAIL

ULTRA XL SYSTEM

DATE:

NOTES:

SCALE: 1:1

TITLE:

SHEET: