

THERMAL BROKEN SUBFRAME
 WINDOW/DOOR JAMB

ULTRA XL SYSTEM

DATE:

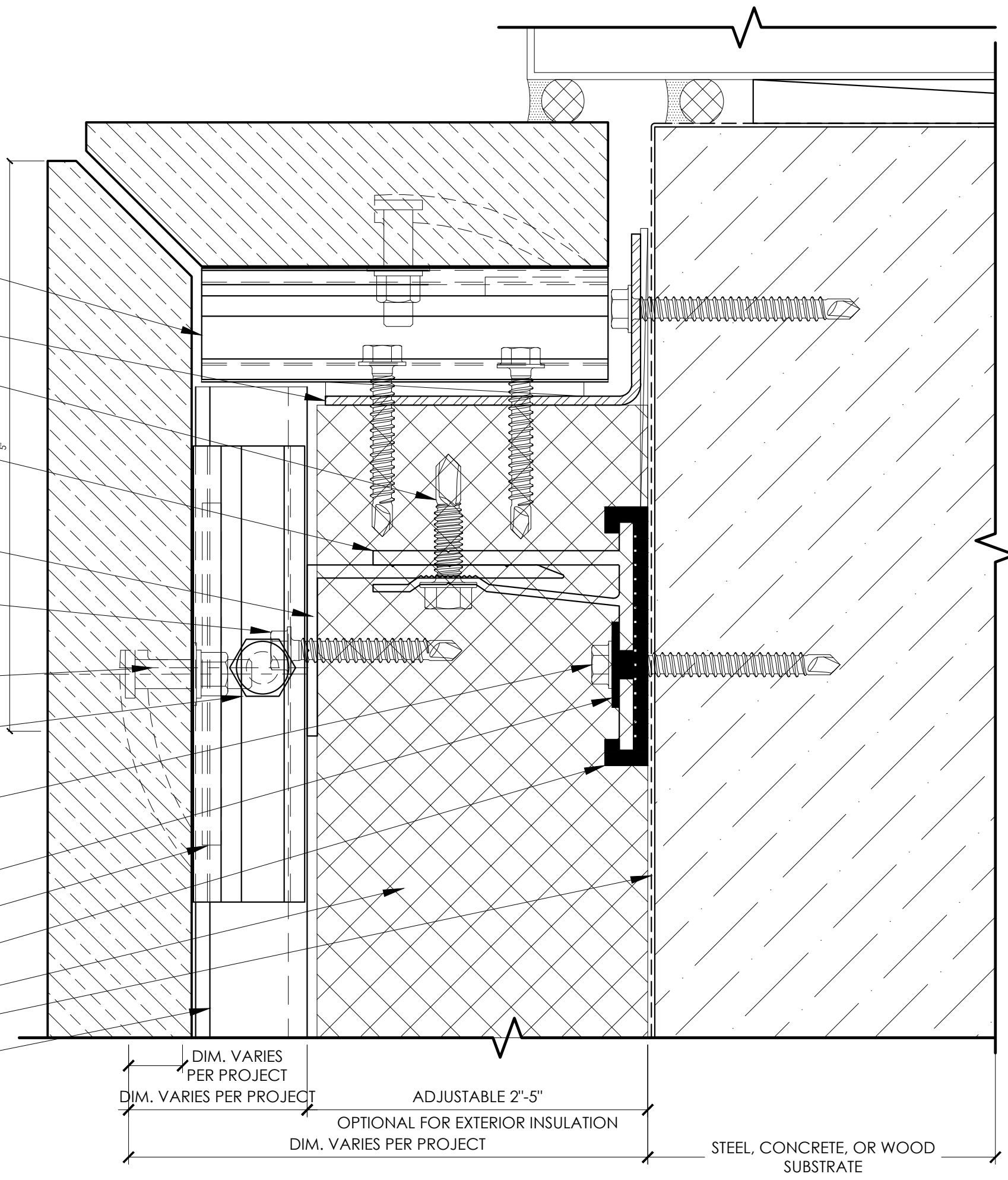
NOTES:

SCALE: 1:1

TITLE:

SHEET:

- WIND LOAD PANEL ANCHOR (DISCRETE) (571)
- SUBSTRATE ANCHOR (CONTINUOUS) (571A)
- FORMED STEEL ANGLE W/G90 COATING
- 1/4" X 1-1/8" (F201)
- GRIDWORX ADJUSTABLE DISCRETE GIRT SUPPORT (16" O.C. HORIZONTAL (A202) 24" O.C. VERTICAL) (A203) (A204) (A205)
- GRIDWORX ADJUSTABLE VERTICAL MULLION (A211) (A214) (A212) (A215) 16" O.C. (A216)
- 1/4" X 1-1/2" (16" O.C. MAX) (F203)
- KEIL 8.5 MM UNDERCUT ANCHOR (F352)
- 5/16"-18 X 1 1/2" ADJUSTMENT SCREW @1/4 POINTS (323)
- 1/4" X 2-1/2" FOR STEEL STUD (F205)
- 1/4" X 2-1/4" FOR CONCRETE/CMU (F104)
- 1/4" X 3" FOR WOOD STUD (F505)
- FASTENER 24" OC VERTICAL SPACING
- THERMAL BREAKING SLEEVE WASHER (C300)
- LOCK WASHER (325)
- THERMAL BREAKING BACK PLATE (C311)
- INSULATION (BY OTHERS)
- WATER PROOFING (BY OTHERS)
- SUBSTRATE ANCHOR (CONTINUOUS) (571A)



DIM. VARIES PER PROJECT
 DIM. VARIES PER PROJECT
 ADJUSTABLE 2"-5"
 OPTIONAL FOR EXTERIOR INSULATION
 DIM. VARIES PER PROJECT
 STEEL, CONCRETE, OR WOOD SUBSTRATE