

STEEL, CONCRETE  
OR WOOD  
SUBSTRATE

DIM. VARIES PER PROJECT

DIM. VARIES PER PROJECT

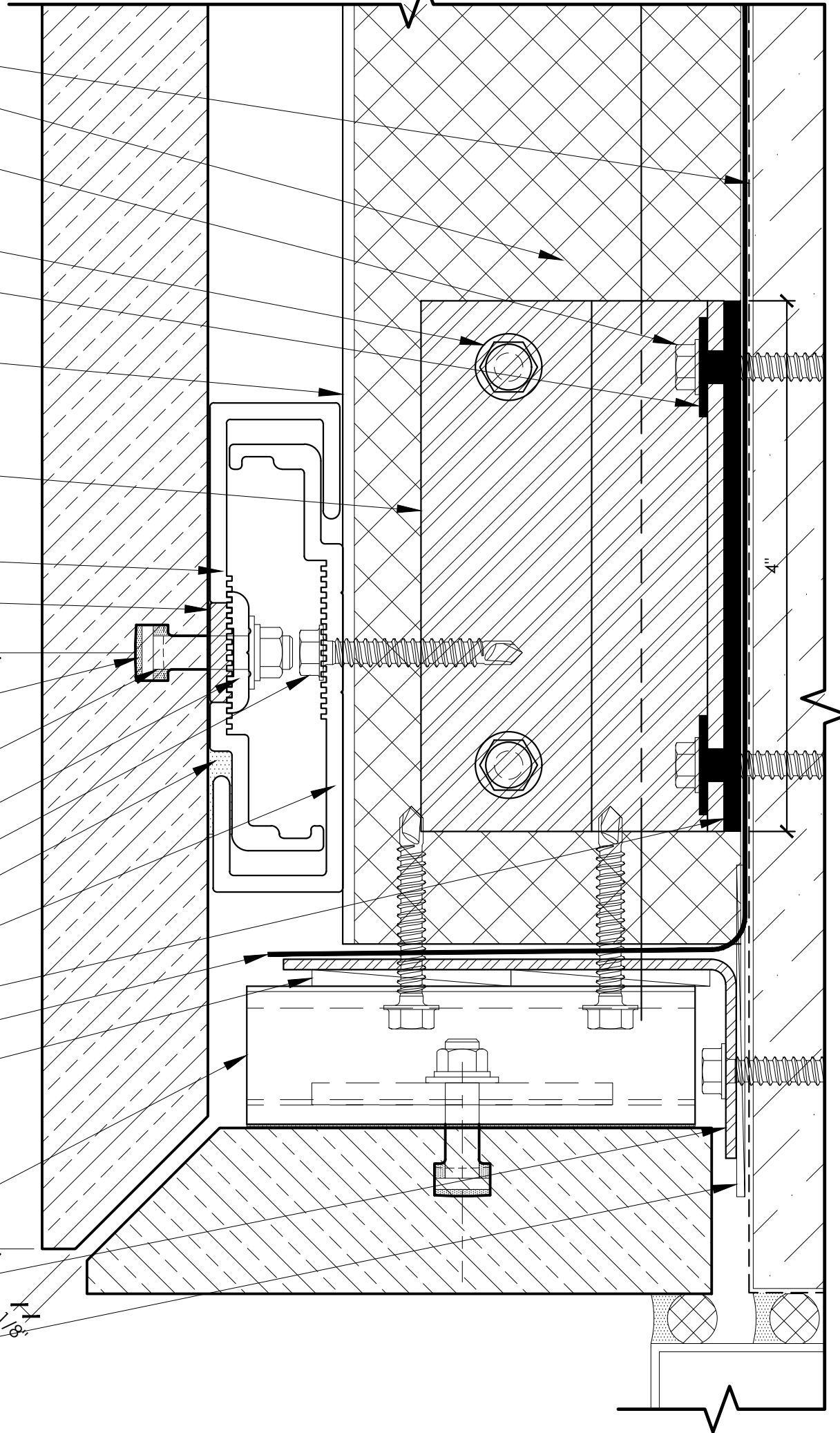
ADJUSTABLE 2"-5"

DIM. VARIES  
PER PROJECT

OPTIONAL FOR EXTERIOR INSULATION

- WATER PROOFING (BY OTHERS)
- INSULATION (BY OTHERS)
- 1/4" X 2-1/2" FOR STEEL STUD (F205)
- 1/4" X 2-1/4" FOR CONCRETE/CMU (F104)
- 1/4" X 3" FOR WOOD STUD (F505)
- FASTENER 24" OC VERTICAL SPACING
- 1/4" X 1-1/8" (F201)
- THERMAL BREAKING SLEEVE WASHER (C300)
- GRIDWORX ADJUSTABLE (A211) (A214)
- VERTICAL MULLION (A212) (A215)
- 16" O.C. (A216)
- GRIDWORX ADJUSTABLE (A202)
- DISCRETE GIRT SUPPORT (A203)
- (16" O.C. HORIZONTAL (A204)
- 24" O.C. VERTICAL) (A205)
- WIND LOAD PANEL ANCHOR (DISCRETE) (571)
- GRIDWORX PROPRIETARY HIGH STRENGTH, FAST CURE STP (SILANE TERMINATED POLYETHER) ADHESIVE/SEALANT
- LOW MODULUS SILICONE APPLIED INTO T-31 SLOT
- GRIDWORX TYPE #31 1-1/4" ANCHORS (MAX 30" VERTICAL, 24" HORIZONTAL) (F300) (F301)
- LOCK WASHER (325)
- 1/4" X 1-1/2" (16" O.C. MAX) (F203)
- CONTINUOUS SILICONE IN KERF
- SUBSTRATE ANCHOR (CONTINUOUS) (571A)
- THERMAL BREAKING BACK PLATE (C311)
- STAINLESS STEEL FLASHING (BY OTHERS)
- FULL BEARING HI-IMPACT RESISTANT PLASTIC SHIM(S) FIELD VERIFY (AS NEEDED, 5/8" MAX)
- WIND LOAD PANEL ANCHOR (DISCRETE) (571)
- SUBSTRATE ANCHOR (CONTINUOUS) (571A)
- FORMED STEEL ANGLE W/G90 COATING (GAUGED BY ENGINEERING)
- MINIMUM 1/16" SHIM FOR THERMAL BREAK

4 1/2"



COPYRIGHT 2015 PRECISION WALL SYSTEMS, INC. - ALL RIGHTS RESERVED - PROTECTED UNDER U.S. PATENT No.8,051,623 B2 & 8,341,901 & 8,950,131. ADDITIONAL PATENTS PENDING.

**THERMAL BROKEN SUBFRAME**  
WINDOW/DOOR SOFFIT RETURN

DRAWN BY:  
**GRIDWORX**  
STONE HANGING SYSTEM  
PRECISION WALL SYSTEMS  
10880 ALDER CIRCLE  
DALLAS, TEXAS 75228  
TEL: 214.774.4502  
FAX: 214.432.5883  
ARCHITECT:  
TEL:  
FAX:

ULTRALIGHT  
SYSTEM  
DATE:  
NOTES:  
SCALE: 1:1

TITLE:  
SHEET: