



TYPICAL PANEL MODIFICATIONS

20mm

30mm

1 1/4"

1 1/2"

40mm

2"

*PLEASE NOTE THAT THESE TYPICAL PANEL MODIFICATIONS WILL ULTIMATELY NEED TO BE REVIEWED AND APPROVED BY A PROJECT ENGINEER LICENSED IN THE STATE/PROVINCE WHERE THE PROJECT IS LOCATED. MODIFICATIONS ARE SUBJECT TO CHANGE DEPENDING ON PANEL TYPE.

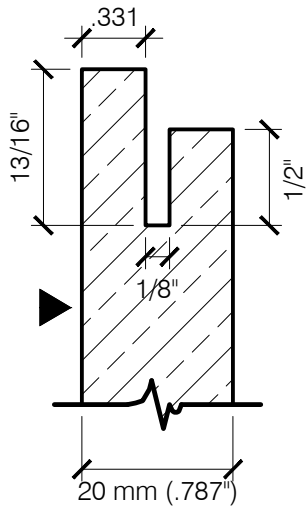
PRECISION WALL SYSTEMS

TYPICAL PANEL MODIFICATIONS FOR GRIDWORX SYSTEM

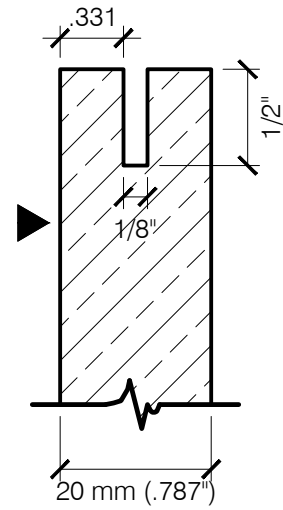
SCALE 1:1



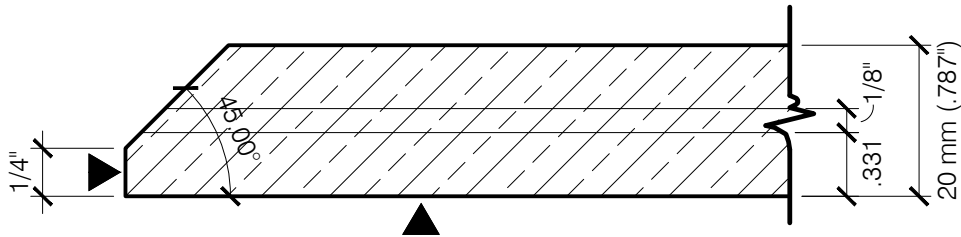
Precision Wall Systems, Inc.
10980 Alder Circle
Dallas, TX 75238
Phone: 214.774.4502
Fax: 214.432.5963
www.gridworxwalls.com



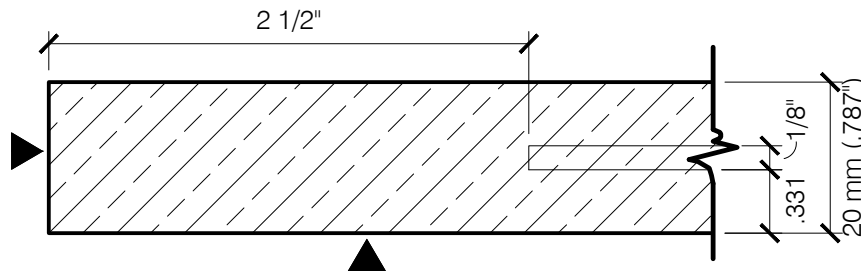
TYPICAL 13/16" REBATED KERF
(FOR DEFLECTION JOINTS) - SECTION VIEW



TYPICAL 1/2" KERF
(STANDARD CONDITION) - SECTION VIEW



TYPICAL QUIRK MITERED EDGE - PLAN VIEW



TYPICAL STOP KERF EDGE - PLAN VIEW

PRECISION WALL SYSTEMS

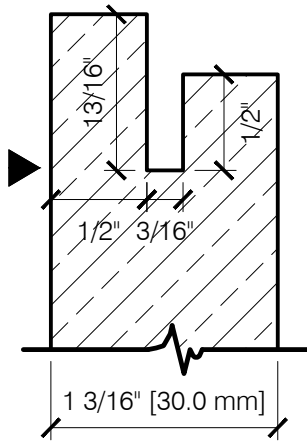
TYPICAL PANEL MODIFICATIONS FOR GRIDWORX SYSTEM

20 mm THICK PANEL

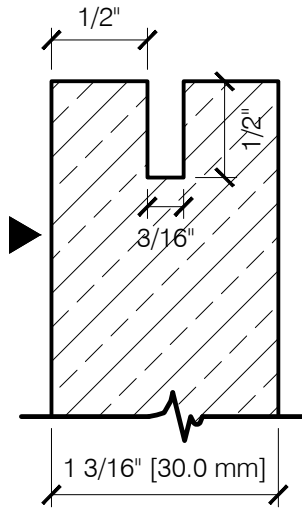
SCALE 1:1



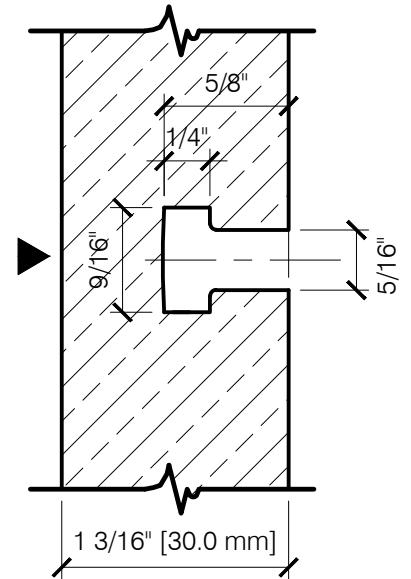
Precision Wall Systems, Inc.
10980 Alder Circle
Dallas, TX 75238
Phone: 214.774.4502
Fax: 214.432.5963
www.gridworxwalls.com



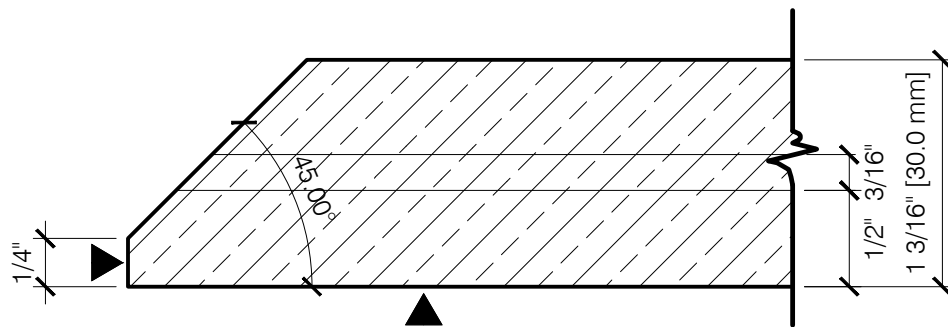
TYPICAL 13/16" REBATED KERF
(FOR DEFLECTION JOINTS) - SECTION VIEW



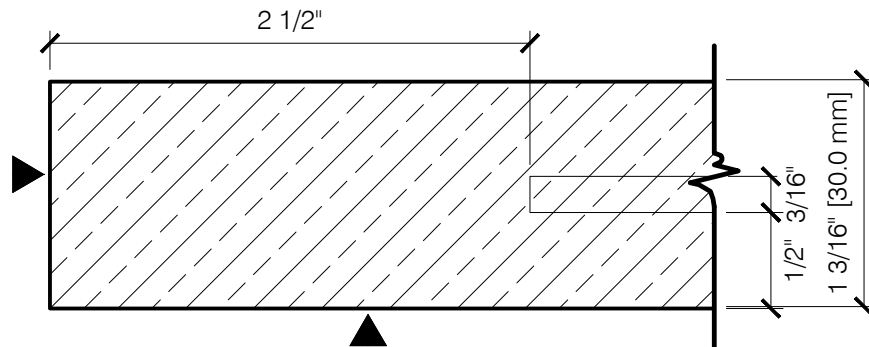
TYPICAL 1/2" KERF
(STANDARD CONDITION) - SECTION VIEW



TYPICAL T-31 COUNTERSINK
(INTERMEDIATE SUPPORT) - SECTION VIEW



TYPICAL QUIRK MITERED EDGE - PLAN VIEW



TYPICAL STOP KERF EDGE - PLAN VIEW

PRECISION WALL SYSTEMS

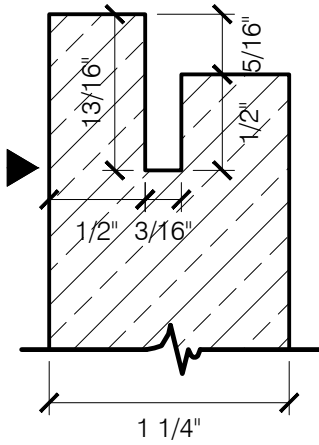
TYPICAL PANEL MODIFICATIONS FOR GRIDWORX SYSTEM

30 mm THICK PANEL

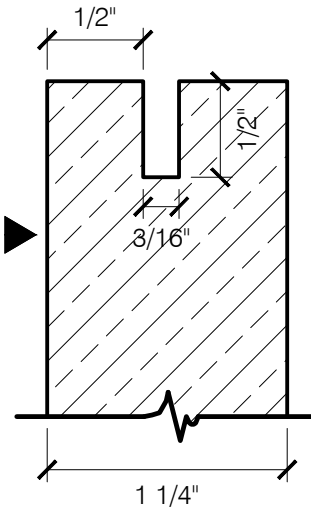
SCALE 1:1



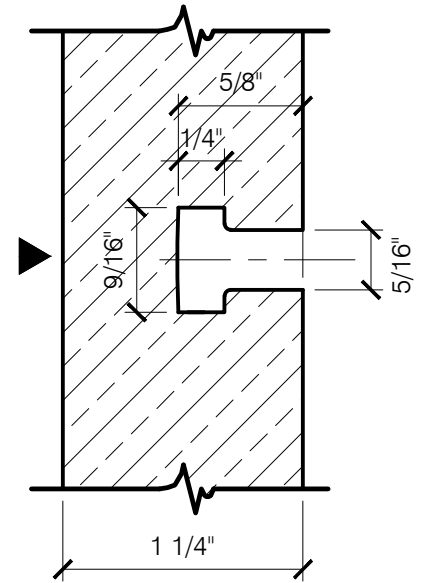
Precision Wall Systems, Inc.
10980 Alder Circle
Dallas, TX 75238
Phone: 214.774.4502
Fax: 214.432.5963
www.gridworxwalls.com



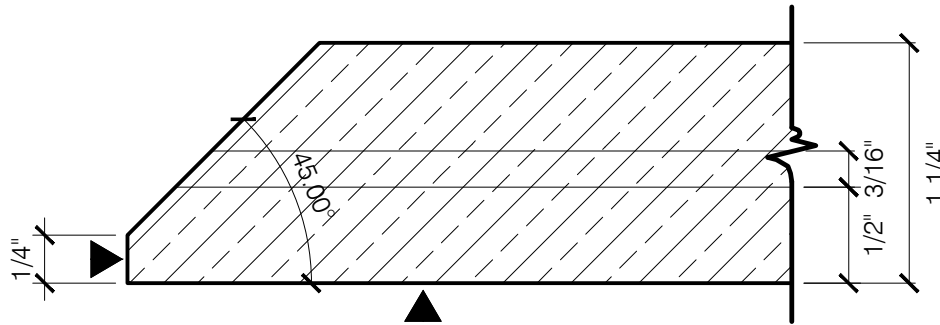
5/16" REBATED KERF
(FOR DEFLECTION JOINTS) - SECTION VIEW



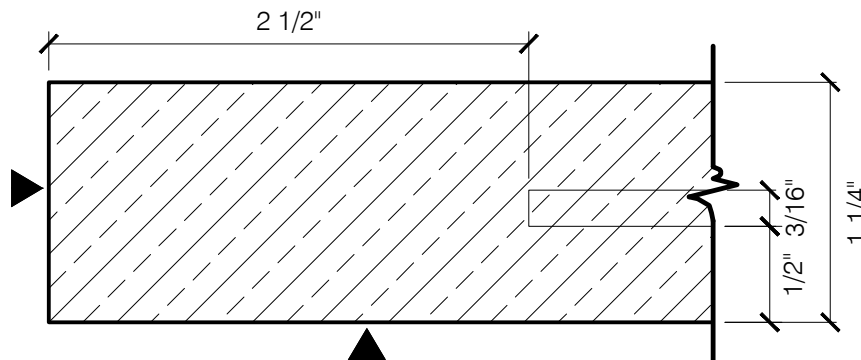
TYPICAL 1/2" KERF
(STANDARD CONDITION) - SECTION VIEW



TYPE 31 SLOT - SECTION VIEW



TYPICAL QUIRK MITERED EDGE - PLAN VIEW



TYPICAL STOP KERF EDGE - PLAN VIEW

PRECISION WALL SYSTEMS

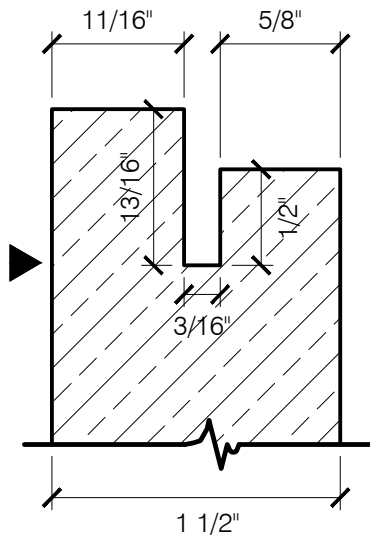
TYPICAL PANEL MODIFICATIONS FOR GRIDWORX SYSTEM

1-1/4" THICK PANEL

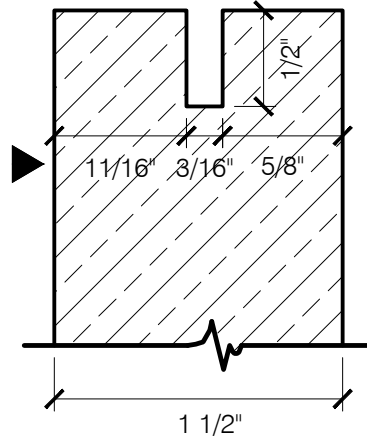
SCALE 1:1



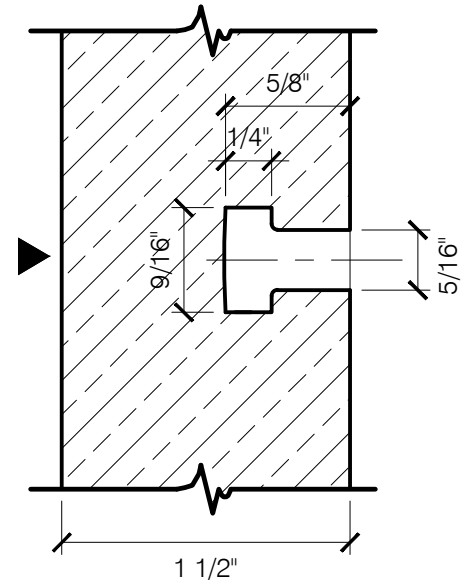
Precision Wall Systems, Inc.
10980 Alder Circle
Dallas, TX 75238
Phone: 214.774.4502
Fax: 214.432.5963
www.gridworxwalls.com



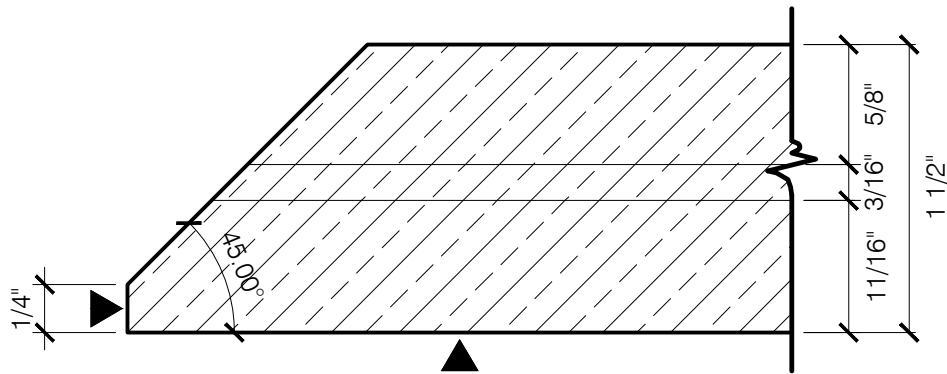
TYPICAL 13/16" REBATED KERF
(FOR DEFLECTION JOINTS) - SECTION VIEW



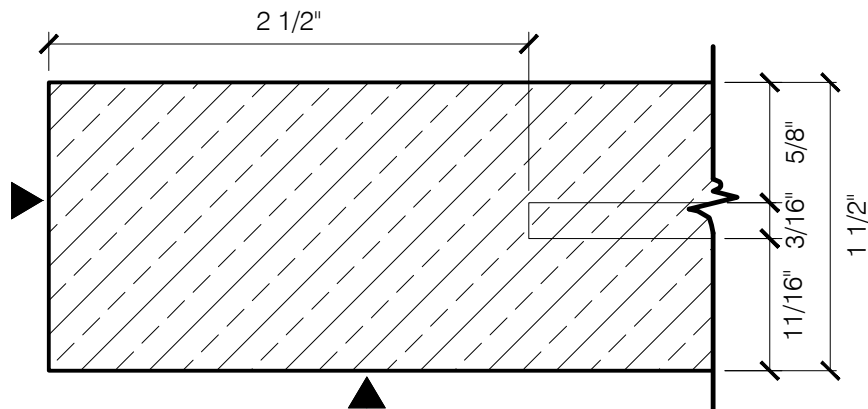
TYPICAL 1/2" KERF
(STANDARD CONDITION) - SECTION VIEW



TYPICAL T-31 COUNTERSINK
(INTERMEDIATE SUPPORT) - SECTION VIEW



TYPICAL QUIRK MITERED EDGE - PLAN VIEW



TYPICAL STOP KERF EDGE - PLAN VIEW

PRECISION WALL SYSTEMS

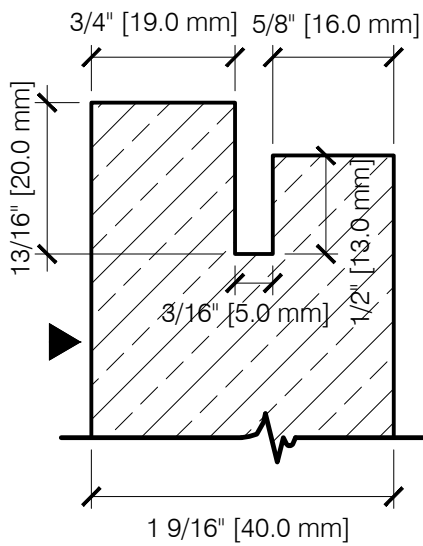
TYPICAL PANEL MODIFICATIONS FOR GRIDWORX SYSTEM

1-1/2" THICK PANEL

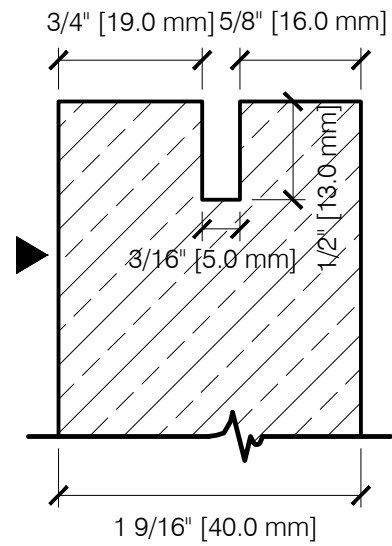
SCALE 1:1



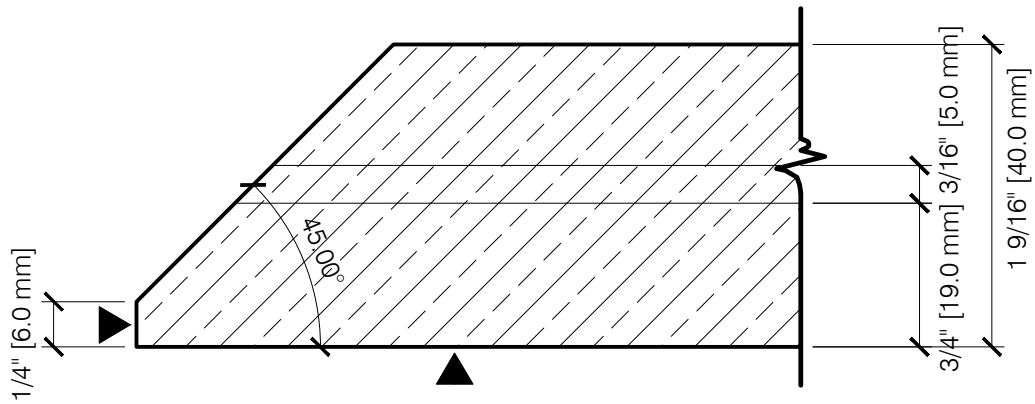
Precision Wall Systems, Inc.
10980 Alder Circle
Dallas, TX 75238
Phone: 214.774.4502
Fax: 214.432.5963
www.gridworxwalls.com



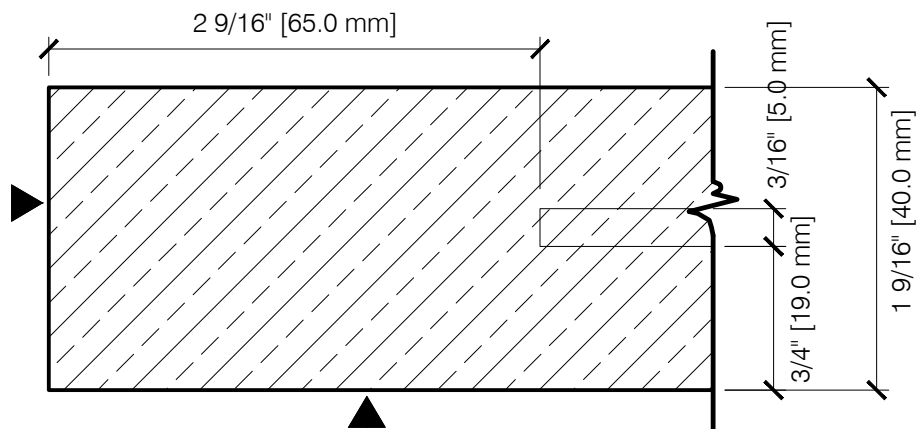
TYPICAL 13/16" (20 mm) REBATED KERF
(FOR DEFLECTION JOINTS, WHEN APPLICABLE) - SECTION VIEW



TYPICAL 1/2" (13 mm) KERF
(STANDARD CONDITION) - SECTION VIEW



TYPICAL QUIRK MITERED EDGE - PLAN VIEW



TYPICAL STOP KERF EDGE - PLAN VIEW

PRECISION WALL SYSTEMS

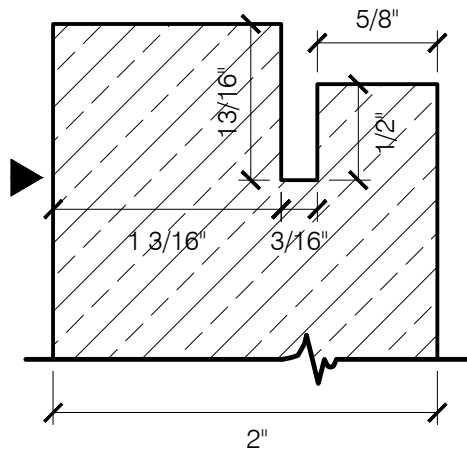
TYPICAL PANEL MODIFICATIONS FOR GRIDWORX SYSTEM

40 mm THICK PANEL

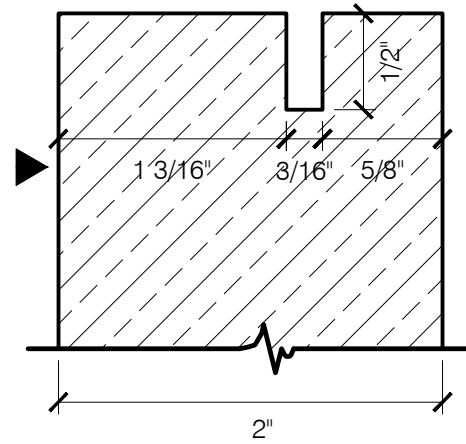
SCALE 1:1



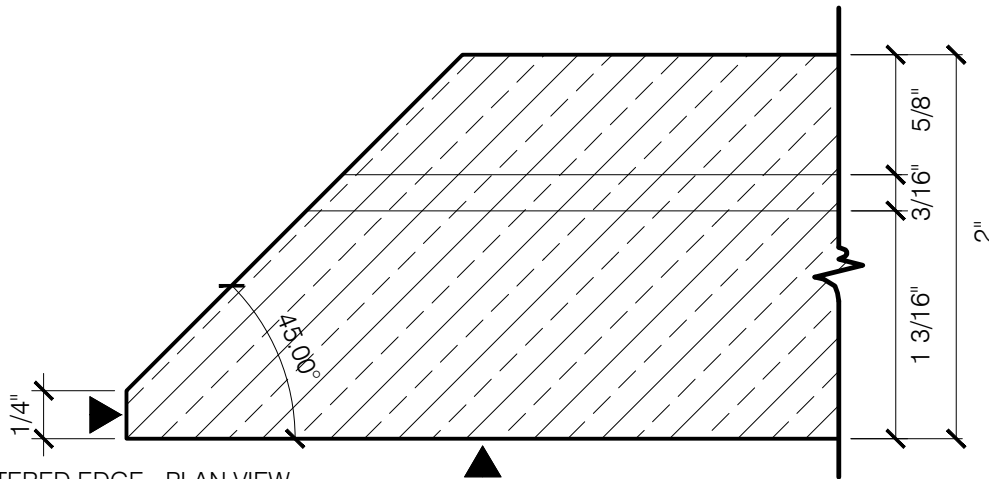
Precision Wall Systems, Inc.
10980 Alder Circle
Dallas, TX 75238
Phone: 214.774.4502
Fax: 214.432.5963
www.gridworxwalls.com



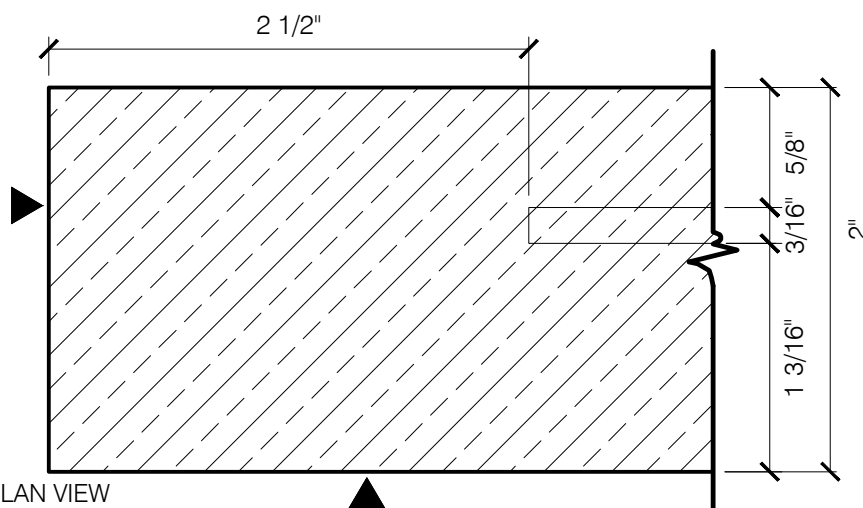
TYPICAL 13/16" REBATED KERF
(FOR DEFLECTION JOINTS) - SECTION VIEW



TYPICAL 1/2" KERF
(STANDARD CONDITION) - SECTION VIEW



TYPICAL QUIRK MITERED EDGE - PLAN VIEW



TYPICAL STOP KERF EDGE - PLAN VIEW

PRECISION WALL SYSTEMS

TYPICAL PANEL MODIFICATIONS FOR GRIDWORX SYSTEM

2" THICK PANEL

SCALE 1:1



Precision Wall Systems, Inc.
10980 Alder Circle
Dallas, TX 75238
Phone: 214.774.4502
Fax: 214.432.5963
www.gridworxwalls.com